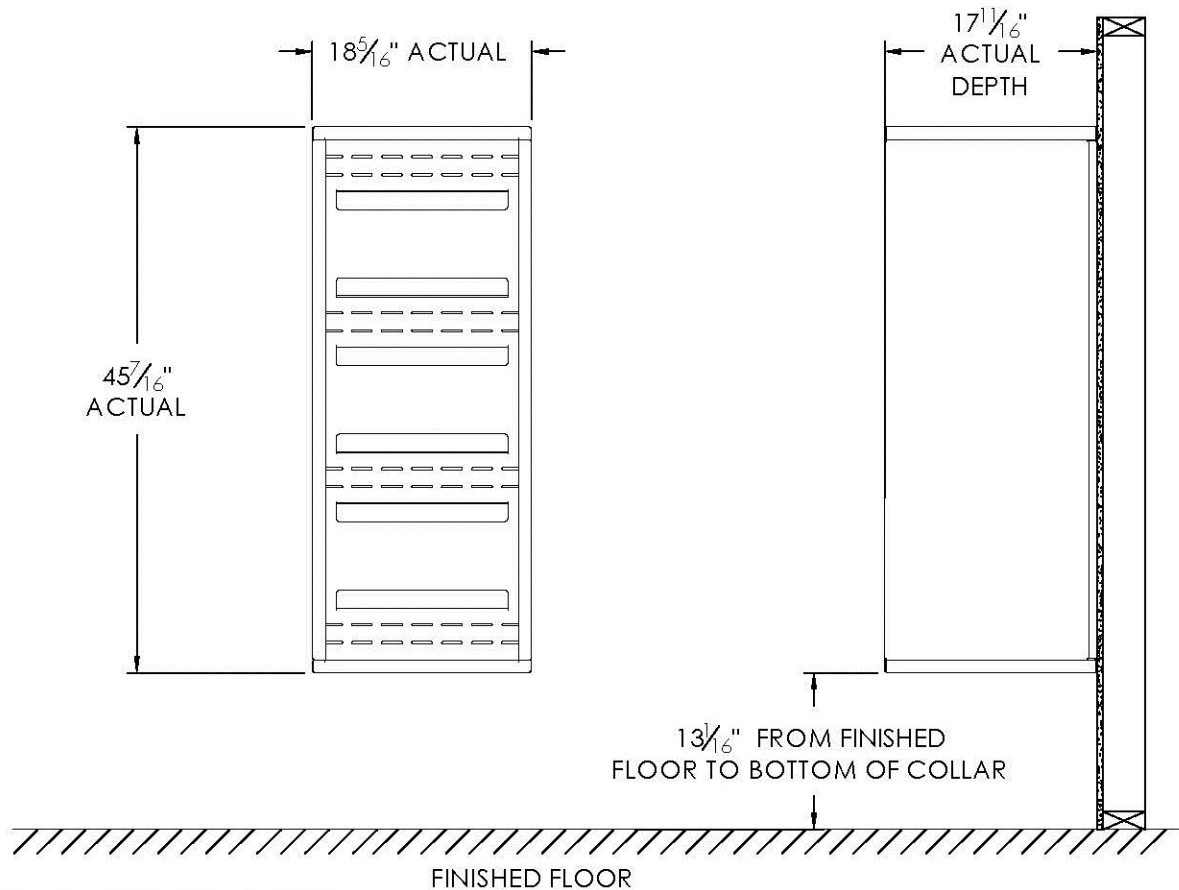


# versatile™ 4C Surface Mount Collar, SM12S



**This Product Distributed By:**

**U.S. Mail Supply, Inc.**

3065 North 124th Street

Brookfield, WI 53005-3857

Ph: 800-571-0147 / Fax: 800-589-1068

[www.usmailsupply.com](http://www.usmailsupply.com)

**Notes:**

1. Designed to mount Florence Versatile™ 4C mailbox single column 12-High Suite modules (sold separately).
2. For use with front loading modules only.

PRODUCT SERIES: VERSATILE™ 4C SURFACE MOUNT COLLAR

**AF FLORENCE**  
manufacturing company

5935 Corporate Drive • Manhattan, KS 66503  
[www.florencemailboxes.com](http://www.florencemailboxes.com) • (800) 275-1747

A GIBRALTAR INDUSTRIES COMPANY

MODEL SM12S

REV B

SCALE NONE

LAST REV DATE  
7/02/2014

DRAWING NUMBER

SM12SCS

DRAWN BY

TNS