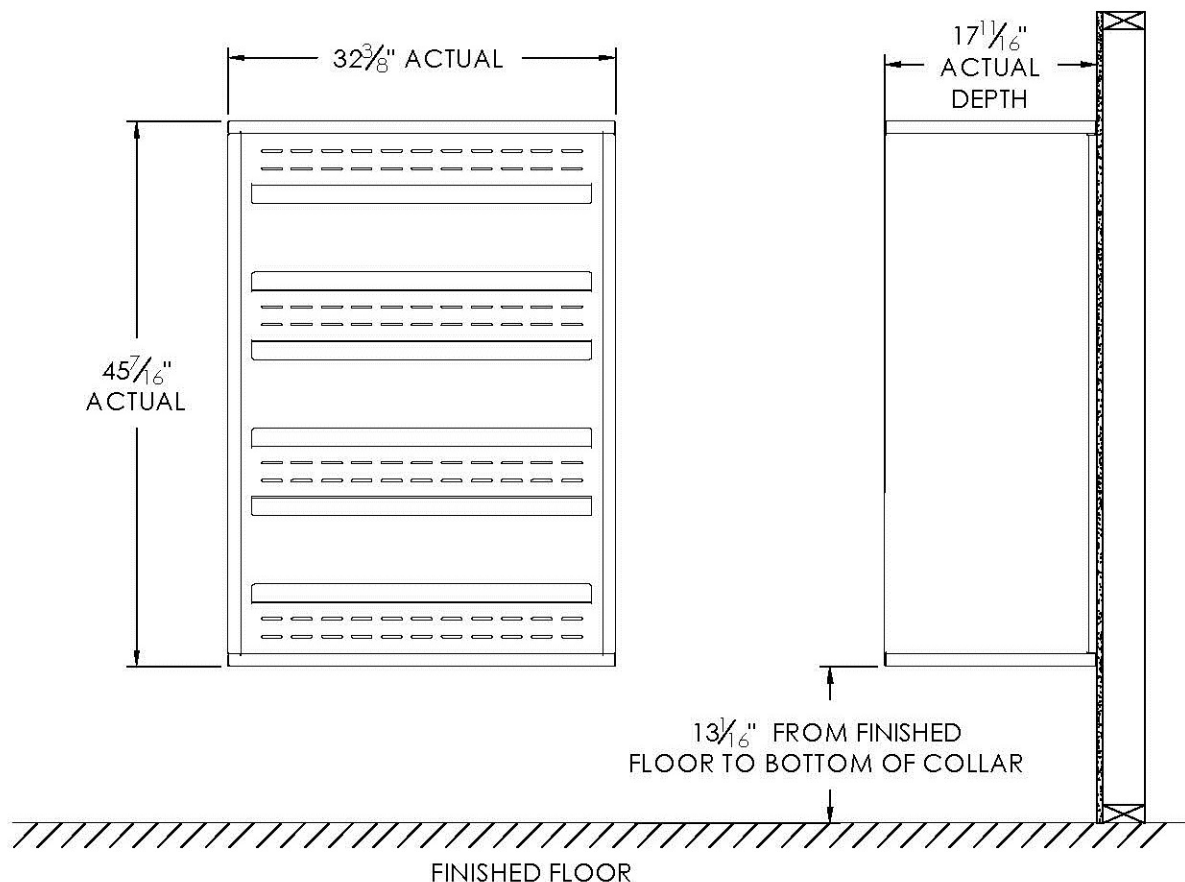


versatile™ 4C Surface Mount Collar, SM12D



This Product Distributed By:

U.S. Mail Supply, Inc.

3065 North 124th Street

Brookfield, WI 53005-3857

Ph: 800-571-0147 / Fax: 800-589-1068

www.usmailsupply.com

Notes:

1. Designed to mount Florence Versatile™ 4C mailbox double column 12-High Suite modules (sold separately).
2. For use with front loading modules only.

PRODUCT SERIES: VERSATILE™ 4C SURFACE MOUNT COLLAR

AF FLORENCE
manufacturing company

5935 Corporate Drive • Manhattan, KS 66503
 www.florencemailboxes.com • (800) 275-1747

A GIBRALTAR INDUSTRIES COMPANY

MODEL	SM12D	REV	B
SCALE	NONE	LAST REV DATE	7/02/2014
DRAWING NUMBER	SM12DCS	DRAWN BY	TNS