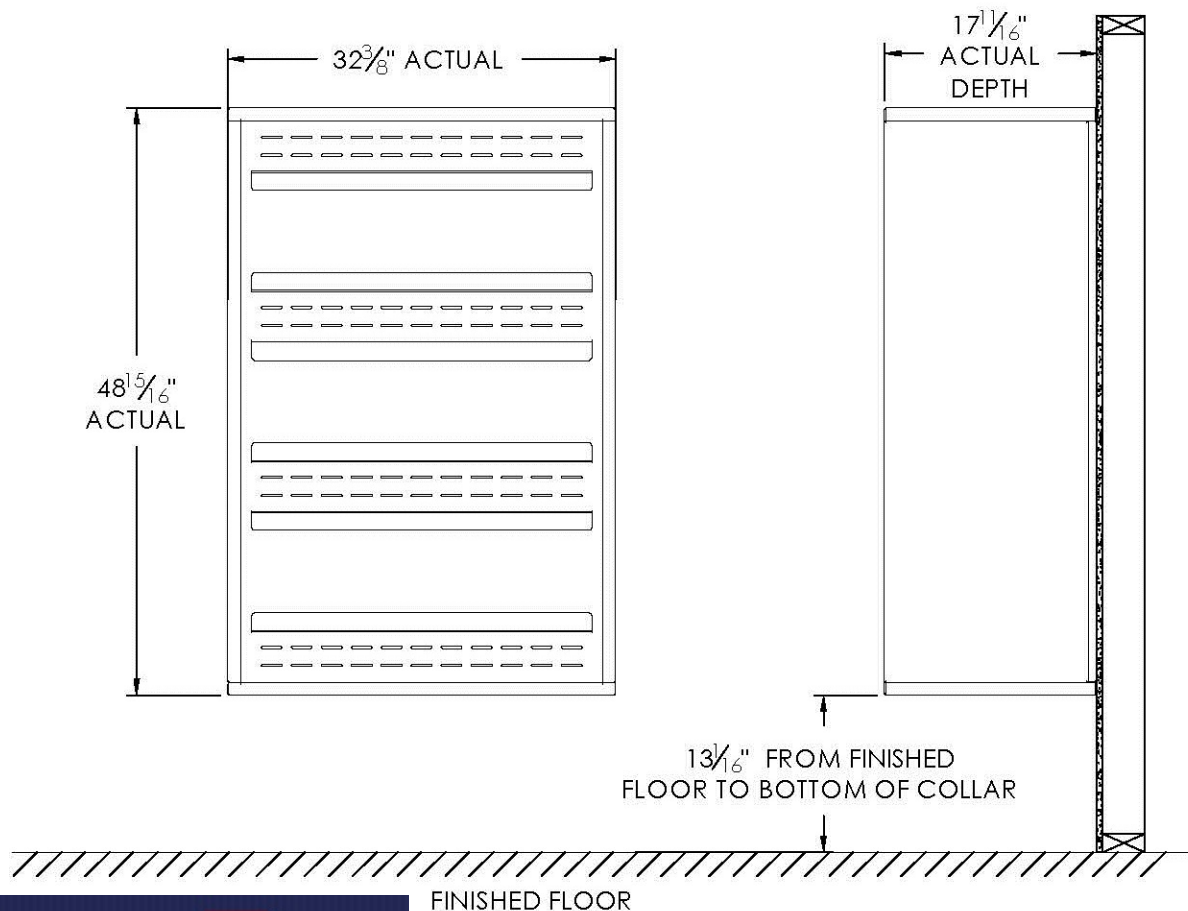


versatile™ 4C Surface Mount Collar, SM13D



U.S. MAIL SUPPLY
America's Mailbox Headquarters

262-782-6510 Toll Free: 800-571-0147

1553 E. Racine Ave. Waukesha, WI 53186

- Notes:
1. Designed to mount Florence Versatile™ 4C mailbox double column 13-High Suite modules (sold separately).
 2. For use with front loading modules only.

PRODUCT SERIES: VERSATILE™ 4C SURFACE MOUNT COLLAR				
 5935 Corporate Drive • Manhattan, KS 66503 www.florencemailboxes.com • (800) 275-1747 A GIBRALTAR INDUSTRIES COMPANY	MODEL	SM13D	REV	B
	SCALE	NONE	LAST REV DATE	7/02/2014
	DRAWING NUMBER	SM13DCS	DRAWN BY	TNS