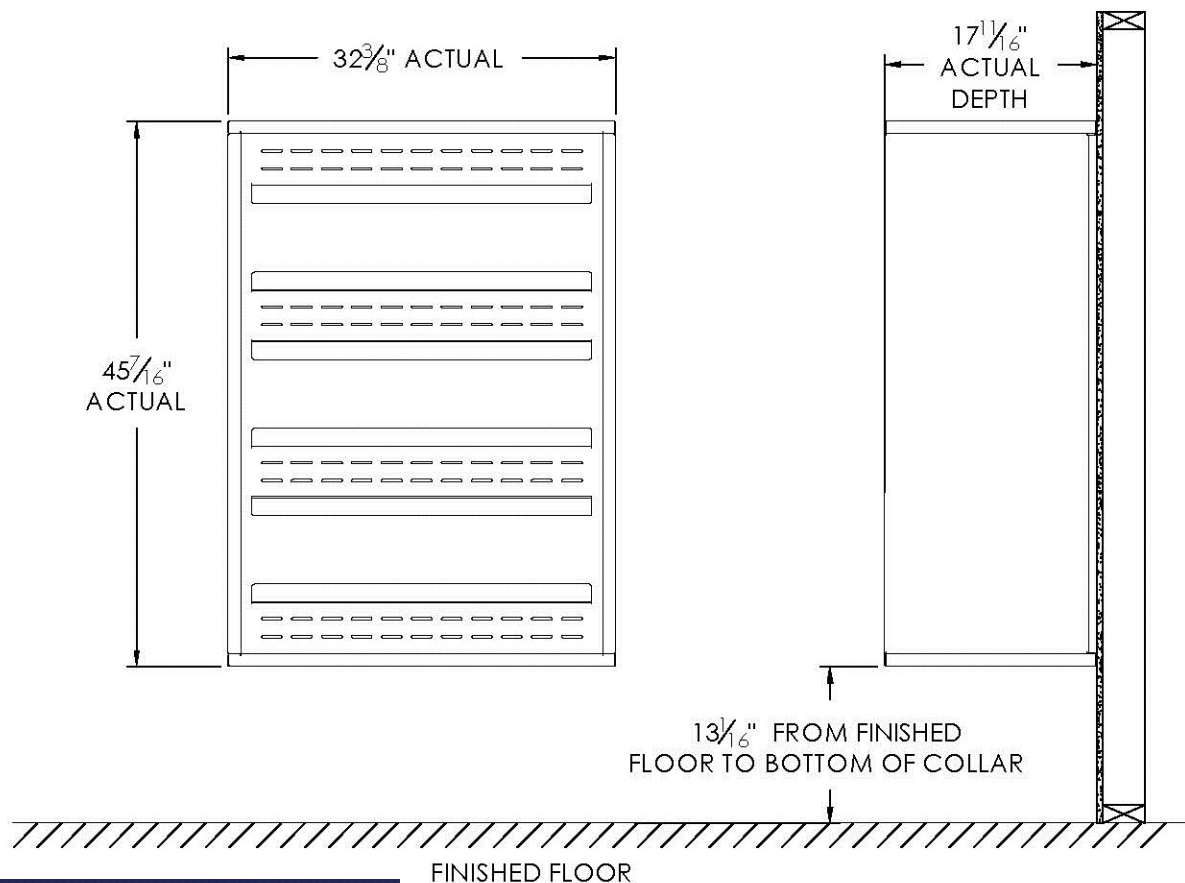


versatile™ 4C Surface Mount Collar, SM12D



U.S. MAIL SUPPLY
America's Mailbox Headquarters

262-782-6510 Toll Free: 800-571-0147

1553 E. Racine Ave. Waukesha, WI 53186

- Notes:
1. Designed to mount Florence Versatile™ 4C mailbox double column 12-High Suite modules (sold separately).
 2. For use with front loading modules only.

PRODUCT SERIES: VERSATILE™ 4C SURFACE MOUNT COLLAR		
AF FLORENCE manufacturing company	MODEL SM12D	REV B
5935 Corporate Drive • Manhattan, KS 66503 www.florencemailboxes.com • (800) 275-1747	SCALE NONE	LAST REV DATE 7/02/2014
A GIBRALTAR INDUSTRIES COMPANY	DRAWING NUMBER SM12DCS	DRAWN BY TNS